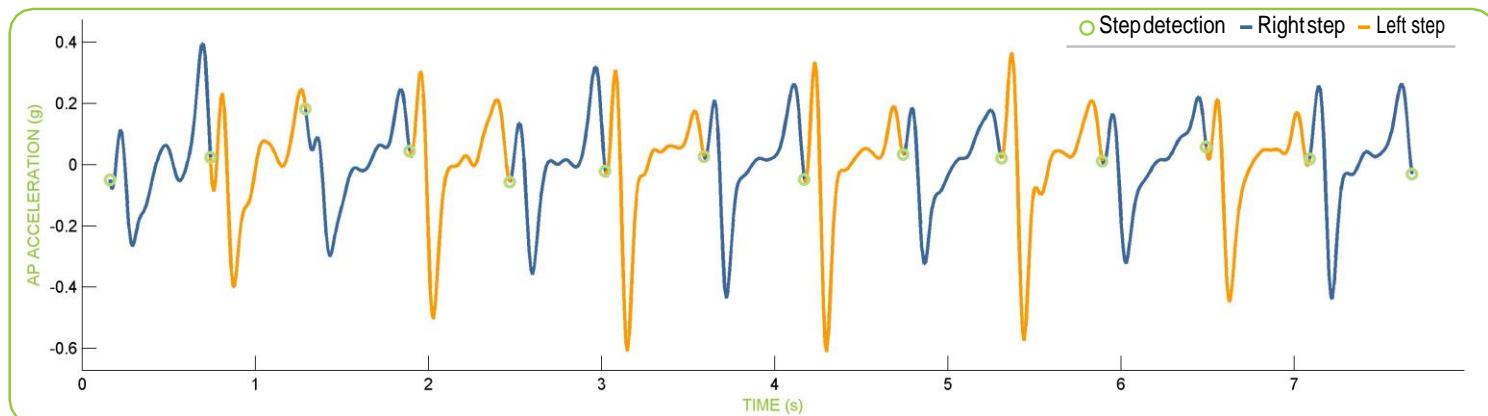


Project name:
Subject code:
Visit:
Condition:

Age:
Height:
Weight:
Gender:

Version:
Date of measurement:
Date of analysis:
Request ID:

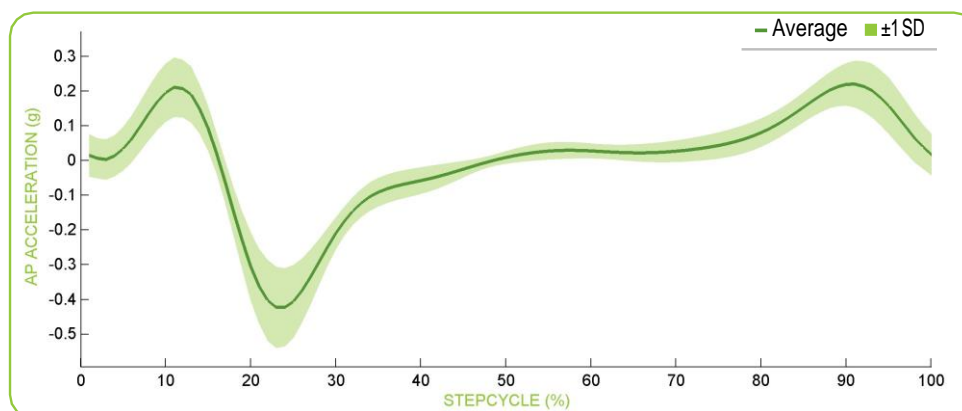
OVERVIEW



SUMMARY

CHARACTERISTICS	MEAN (SD)
Trajectory length (m)	10.00
Steps (n)	13
Velocity (m/s)	1.25
Stepfrequency (Hz)	1.73
Step length (m)	0.72
Gait intensity (m/s ²)	2.49

AVERAGE STEP

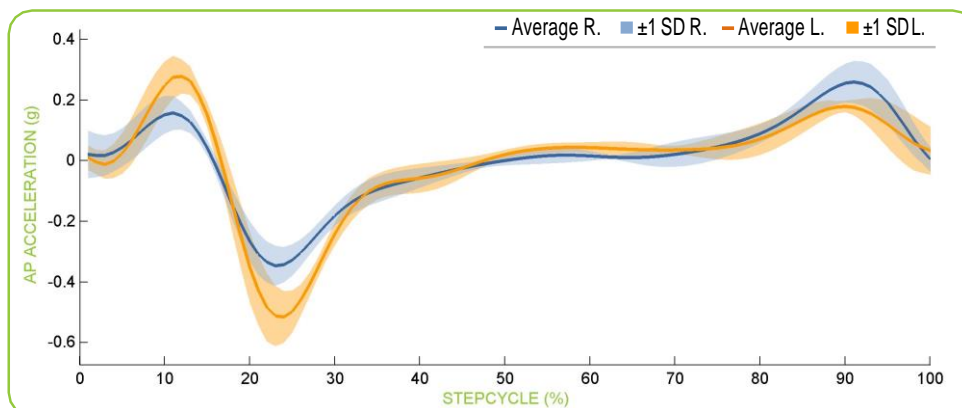


SYMMETRY

CHARACTERISTICS	MEAN RIGHT	MEAN LEFT	ASYM. (%)
Step time (s)	0.58	0.57	1.11
Step intensity (m/s ²)	1.54	1.73	12.10

CHARACTERISTICS	VT	ML	AP
Step symmetry *	1.00	-1.43	1.03
Step symmetry **	4.48	2.34	4.12

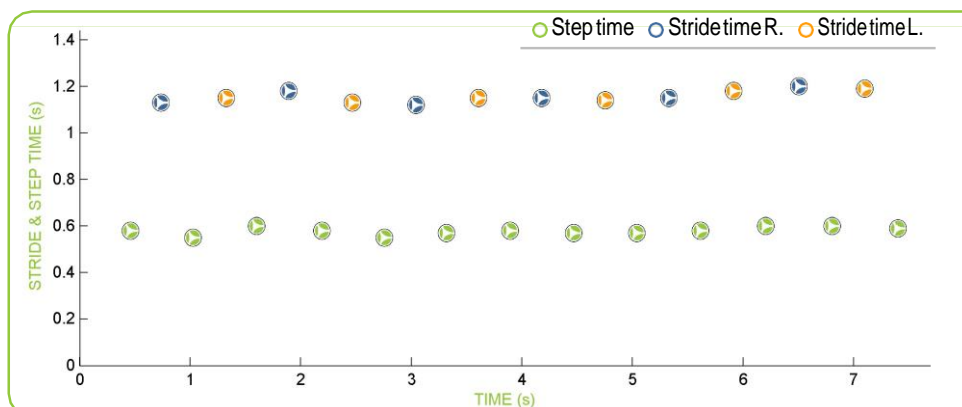
AVERAGE LEFT & RIGHT STEP



REGULARITY

CHARACTERISTICS	MEAN (SD)
SD Step time (s)	0.02
Step regularity AP *	0.87
Gait smoothness AP **	0.42
Stride regularity AP *	0.85

STRIDE & STEP TIME



* Estimation of gait cycle characteristics by trunk accelerometry, Rolf Moe-Nilsen, Jorunn L. Helbostad, J Biomech. 2004 Jan; 37(1): 121-126

** Ambulatory fall-risk assessment: amount and quality of daily-life gait predict falls in older adults, Kimberley S. van Schooten, Mirjam Pijnappels, Sietse M. Rispen, Petra J. M. Elders, Paul Lips, Jaap H. van Dieën, J Gerontol A Biol Sci Med Sci. 2015 May; 70(5): 608-615